

## River of Ponds north to Eddies Cove in Newfoundland; Blanc Sablon west to Red Bay in Labrador.

- Includes Port au Choix, Flower's Cove, Forteau, and L'Anse-au-Loup

### Church and Cemetery Records, and Church Histories

Sealskin boots and a printing press: piecing together the life of Canon J.T. Richards [Anglican] / by Irving Letto. 2012. (available for loan)

### Community and Family Histories, and Memoirs

The burial at L'ANSE-AMOUR / by Robert McGhee. 1976. (available for loan)

A century on BONNE ESPERANCE: the saga of the Whiteley family / by Albert S. Whiteley. 1977. (available for loan)

Chronicles of PLUM POINT / by Elva H. Spence. 1993. (available for loan)

The crooked top of a safety pin and other stories: excerpts from the oral history of the LABRADOR STRAITS / compiled by Cindy Gibbons for the Partners in Learning Oral History Program. 1998. (available for loan)

The forgotten Labrador: KEGASHKA to BLANC-SABLON / by Cleophas Belvin. 2015. (available for loan)

Heads and tails: a collection of stories and more [LABRADOR SOUTH COAST] / compiled by Ardena Cadwell. [1998?]. (in-library use only)

In Cain's footsteps: [people of the LABRADOR STRAITS] / by Doug Letto. 2000. (available for loan)

Isobel Millen: Adventures of a Grenfell Teacher [L'ANSE AU LOUP] / compiled and edited by Jan Redford. 2019. (available for loan)

My father's footsteps [L'ANSE-AU-CLAIR] / by Grenfell Letto. 2008. (available for loan)

PORT SAUNDERS: the first 75 years (1885-1960) / by Tom Caines. 2016. (available for loan)

RED BAY, Labrador: world whaling capital A.D. 1550-1600 / by James A. Tuck [and] Robert Grenier. 1989. (available for loan)

A well-travelled Way: an autobiography [FLOWER'S COVE] / by R. Clifton Way. 2013. (available for loan)



Point Riche Lighthouse, Port Aux Choix

Point Riche Lighthouse, Port aux Choix.  
Postcard Collection SY107.

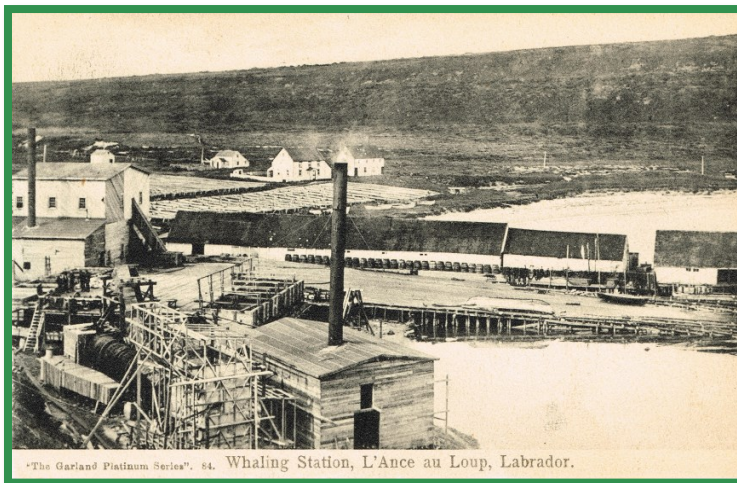
## Periodicals

Labrador South Review, 1976-1982 incomplete

The Northern Pen, 1980 -

## Vertical Files

- Eddie's Cove
- Forteau
- Hawkes Bay
- L'Anse-Amour
- Port au Choix
- Port Saunders
- Red Bay

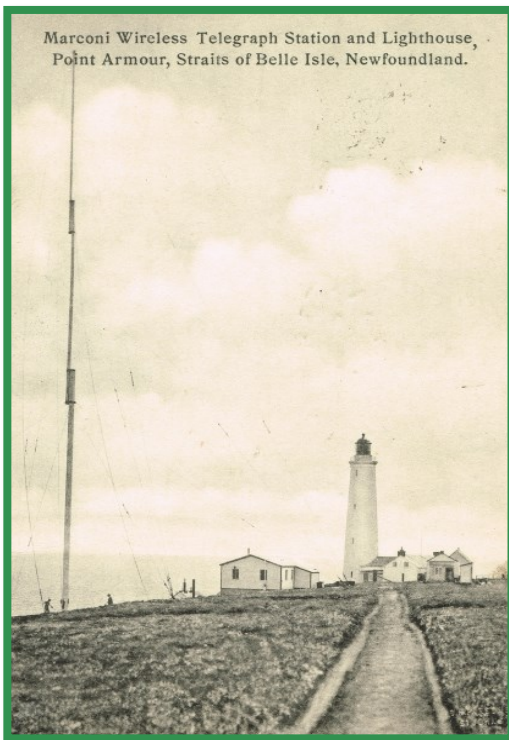


"The Garland Platinum Series". 84. Whaling Station, L'Anse au Loup, Labrador.  
Whaling Station, L'Anse au Loup. *Postcard Collection L10.*

## Other – Court Records, Reunions, School Yearbooks, Scholarly Works

The cooks of ST. BARBE / by the St. Barbe Cookbook Committee. [199?]. (in-library use only)

Nascopi: hunters of the barrens (*Mountain Field Central High, FORTEAU*): 1978, 1979.  
(in-library use only)



Marconi Wireless Telegraph Station and Lighthouse,  
Point Armour, Straits of Belle Isle.  
*Postcard Collection L8.*